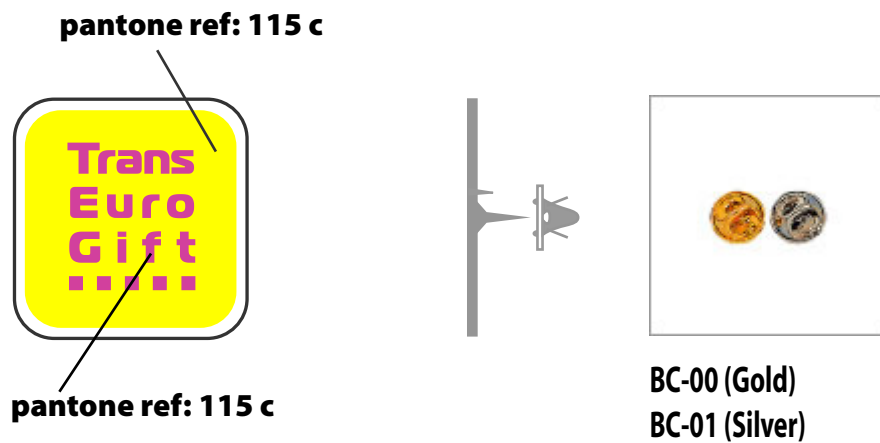


## For Pin's:

Take the following base

- Specify the logo position
- Specify the shape and the size of your Pin's
- Specify the PANTONE reference of your logo
- Adapt your logo on the Pin's
- Specify the attachment

Example:



## For Badges:

Take the following base

- Specify the logo position
- Specify the PANTONE reference of your logo
- Adapt your logo on the Badges
- Specify the attachment

Example:

